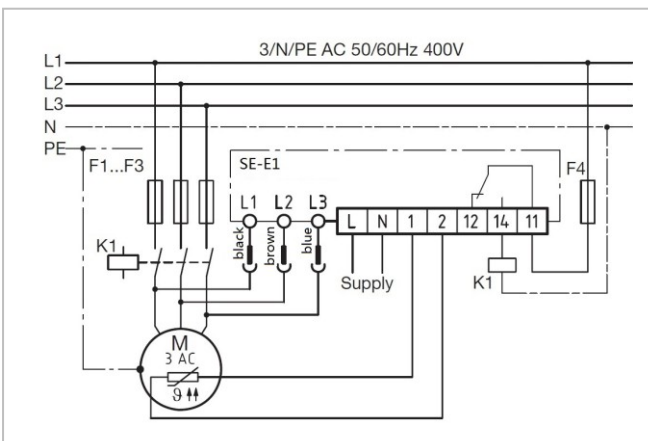
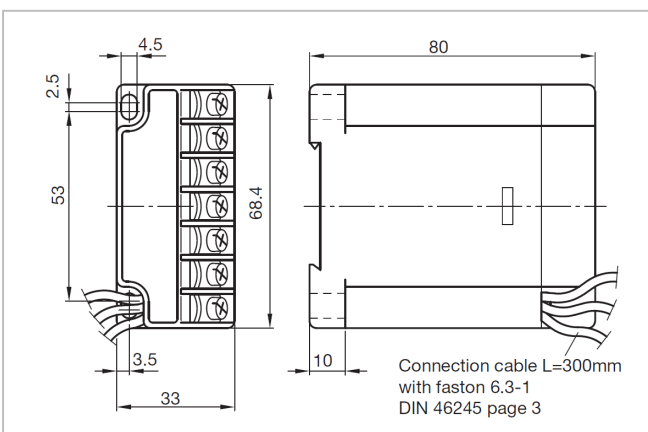


SE-E1 Motor Protector | Part-No.34701701| Part-No.34701710



Wiring diagram



Dimensions in mm

Application:

Monitoring of motor temperature, phase sequence and phase failure of motors in refrigerant compressors.

Used for screw compressor.

Functional description:

- After the supply voltage has been connected, a three-second initialisation period follows. Provided the PTC chain resistance is below the reset threshold(2.95KΩ), the relay trips after these 3 seconds have expired.
- The SE-E1 can monitor up to nine PTC thermistors even with differing rated shut-off temperatures. If one or more PTC thermistors become highly resistive, the motor protector switches off. After cooling down below the reset threshold, a 5-minute delay period begins. When this period has expired, the relay trips again, provided all PTCs are below the reset threshold. If a second PTC error is detected within 24 hours of the first, the delay period is 60 minutes. If a third PTC error occurs within the 24-hour period, the relay switches off and locks.
- The monitoring of the three-phase motor voltage becomes active 1 second after the motor has started, for a time window of 10 seconds. In case of a wrong phase sequence or a phase failure, the relay switches off and locks.
- After the motor is shut off, the phase monitoring is inactive for 20 seconds to avoid an unintended shut off by a motor that possibly may be rotating in reverse.
- The lock-out and delay can be removed by a mains reset(>5s).
- The sensor and supply circuits are galvanically isolated from each other.
- The relay output is designed as a potential-free change-over contact in closed-circuit principle.
- The SE-E1 is not suitable for use with frequency converters.

Technical specifications

Order No. 15G08 SEE 11	Supply voltage AC50/60Hz 208-240V±15% 3VA
15G08 SEE 12	AC50/60Hz 115-230V -15%...+10% 3VA
15G08 SEE 13	AC50/60Hz 24V±15% 3VA
Permitted ambient temperature	-30...70°C
Temperature measuring circuits	
-Type	PTC, acc.to DIN44081/082
-Number of sensors	1...9 serial
-R _{25,total}	< 1.8 KΩ
-R _{trip}	11.40 KΩ±20%
-R _{reset}	2.95 KΩ±20%
-max.lead length	< 30m
-Measurement voltage	≤2.5V(acc.to IEC 60034-1)
Time delay after cooldown	
-1 st shutdown in 24h	5min±1min
-2 nd shutdown in 24h	60min±5min
-3 rd shutdown in 24 h	Lock-out
Phase monitoring	3AC 50-60Hz,200-632V±10% active while t ₀ +1S... t ₀ + 11S
-Monitoring inactive	20 seconds after the motor stop.
Reset of lock-out	Power off > 5s
Relay	Max AC 240V 2.5A, C300 Min. AC/DC > 24V, > 20mA
Mechanical service life	Approx. 1 million switching cycles
Protection class acc. to En 60529	IP00
Connection type	6.3mm flat plut sleeves and screw terminals
Housing material	PA66,glass-fibre-reinforced
Mounting	To snap open to 35mm standard rail as under EN 60715 or screw mounting
Dimensions in mm	68.4*33*80(L*W*H)
Weight	Approx.200g

Technical changes reserved



The unit must be connected by trained electrical personnel.